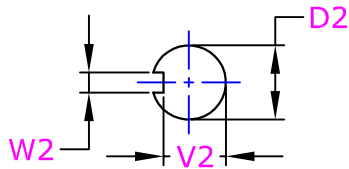
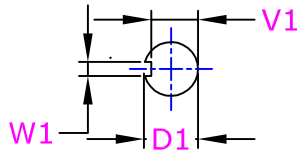


WORM REDUCERS TYPE 'U' - UNDERDRIVEN.

Keyway Details.

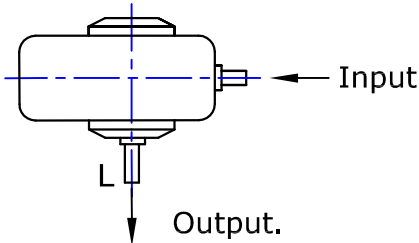
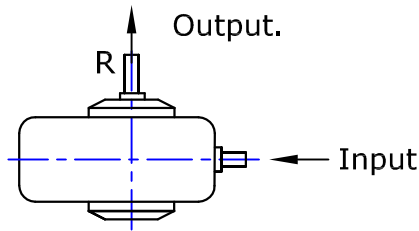


OUTPUT SHAFT



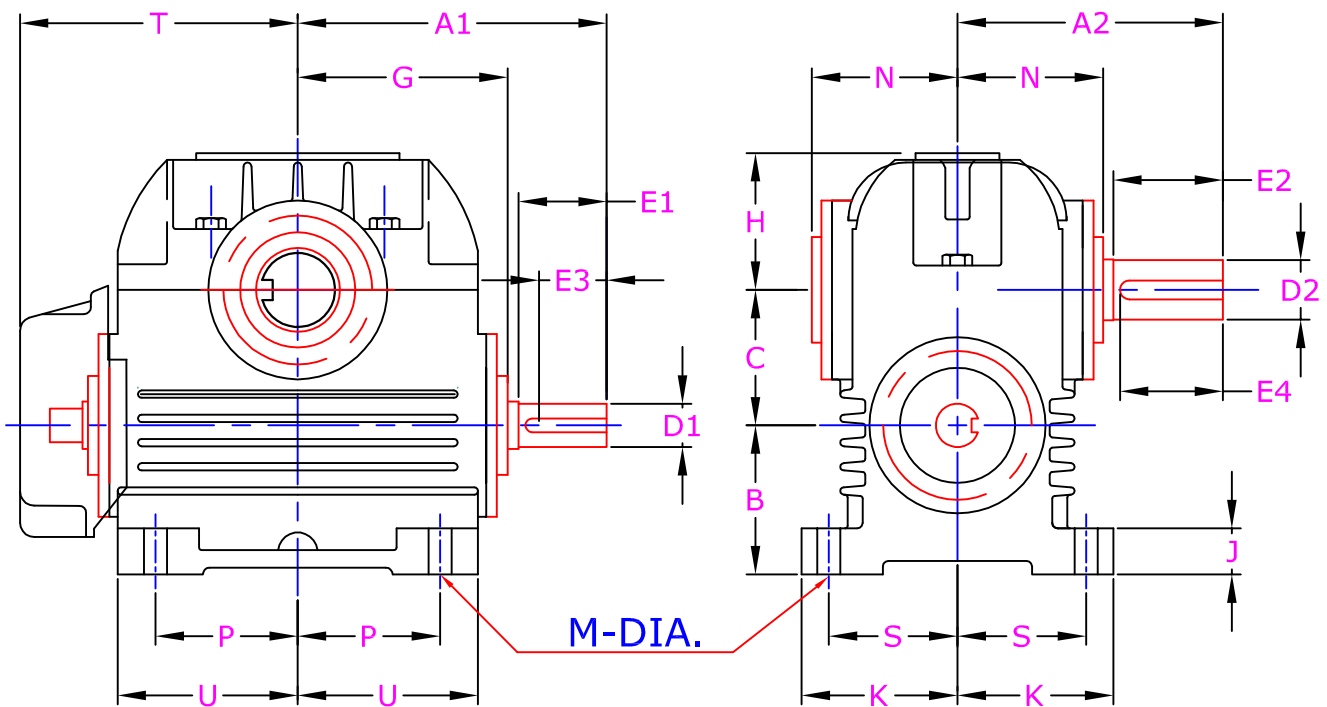
INPUT SHAFT

SHAFT HANDLING



NOTES: -

- 1) All dimensions are in MM,
- 2) Keyway as per IS:2048.
- 3) Units can be supplied with double extended Input and output shafts. In this case Fan and Fan cover will be supplied on request.
- 4) 90 cd - Fan / cover not provided.



PRINCIPAL DIMENSIONS (M.M.)

SIZE	C	B	A1	A2	E1	E2	E3	E4	D1	D2	P	S	M	J	N	G	U	K	H	T	W1	W2	V1	V2
90	90	99	199	178	60	75	55	70	32	44	95	86	13	32	98.5	134	115	108	108	--	10	14	27	38.5
100	100	110	228	196	66	85	60	75	32	44	105	95	18	38	102	139	133	115	96	205	10	14	27	38.5
127	127	115	261	248	70	98	65	90	38	52	124	111	22	50	132	182	163	136	160	254	10	16	33	46
152	152	127	280	267	74	112	70	105	38	58	133	120	24	62	138	198	180	150	185	278	10	16	33	52
180	180	146	315	300	85	125	78	115	45	62	152	134	25	70	150	228	208	162	210	305	14	18	39.5	55
205	205	148	342	310	90	138	80	125	45	70	172	134	25	52	160	250	230	172	235	330	14	20	39.5	61
230	230	172	376	335	102	146	95	135	50	76	182	288	27	55	174	266	231	176	238	360	16	22	44	67
254	254	172	425	350	115	150	115	150	57	82	215	165	27	60	184	300	300	200	264	450	16	22	51	73
305	305	190	495	405	122	172	146	160	62	95	260	185	36	55	215	365	355	220	345	445	18	25	55	85
355	355	215	570	480	148	190	150	185	75	115	300	215	42	60	255	415	415	260	395	525	20	32	66	104